



Welcome to White Meadow's Two-Year-Old Nursery 2026



The Senior Leadership Team



Mrs Dingwall - Headteacher



Mr Comben - Deputy Headteacher



Mrs Reid - Assistant Headteacher



Mrs Smith - Assistant Headteacher



Miss McFarlane - Head of Inclusion



Mrs Ferrier- SENDCO

Meet the Nursery



Mrs Winter
Nursery Leader



Miss Lees
Teacher



Mrs Wares
Teacher



Mrs Scriven
Nutmeg Room Lead



Miss Wozencroft
TSA and Keyworker



Mrs Long
TSA and Keyworker



Mrs Edney
TSA and Keyworker



Mrs Saunders
TSA and Keyworker



Miss Scriven
TSA and Keyworker

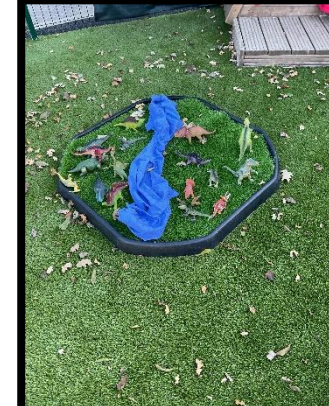
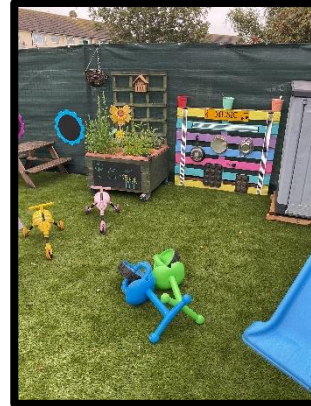
These are some pictures of your new Nursery classroom.



**In Nursery we love to make mess, paint, sing, dance, mark-make,
count, bake, learn our sounds and explore all the areas in our classroom.**

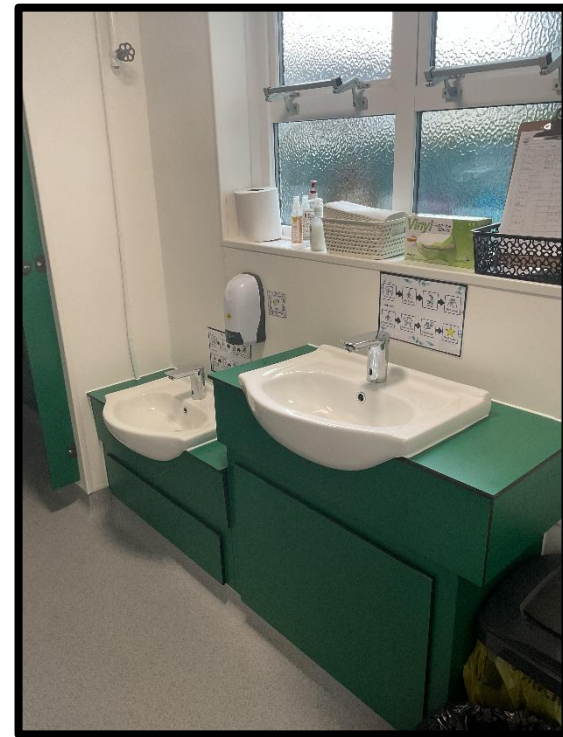
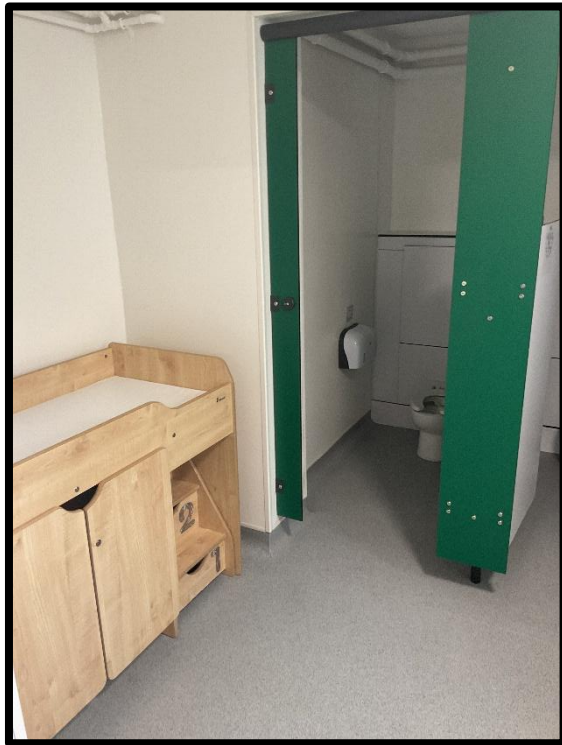
**We have so much fun learning through play! There are fold out beds for the
children that need a nap.**

There are many things we enjoy doing in our Outdoor Classroom
such as:



- Playing games on our Astro turf in the big outdoor area
- Making yummy recipes in our mud kitchen
- Getting messy and playing in the sand and water
- Snuggling up on our huge bean bags and sharing a story
- Walking along our balance beams
- Riding on our Scuttle Bugs and playing with many more toys!

In our Nutmeg Nursery Classroom we have 2 toilets. They are the perfect size just for you. What number will you choose? We also have potties when they are needed too.



This is the outside of your Nursery Classroom. Your grown up from home will bring you through the outdoor area to Nutmeg's front door.



If you would like your child to have a hot dinner, you can pre-order through Chartwells. You will need to provide a packed lunch until these are set up. Alternatively, you can provide a packed lunch for your child. We encourage healthy eating at White Meadows and are also a nut free school, so we ask that no chocolate or nuts are included in your child's lunch.



This is where you will put your bags and coats.

When needed, we have pegs to hang our coats on the side of the unit so that they can dry.





We have a buggy park available to the right of Nutmeg where you are welcome to store your child's buggy. This is available everyday apart from on a Wednesday if you are collecting or dropping your child off at 12pm as this will be locked during the day.

Please note that this applies to your child's transition days too.

**We are so looking forward to welcoming you and watching you grow
with us in Nursery!**

